
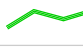



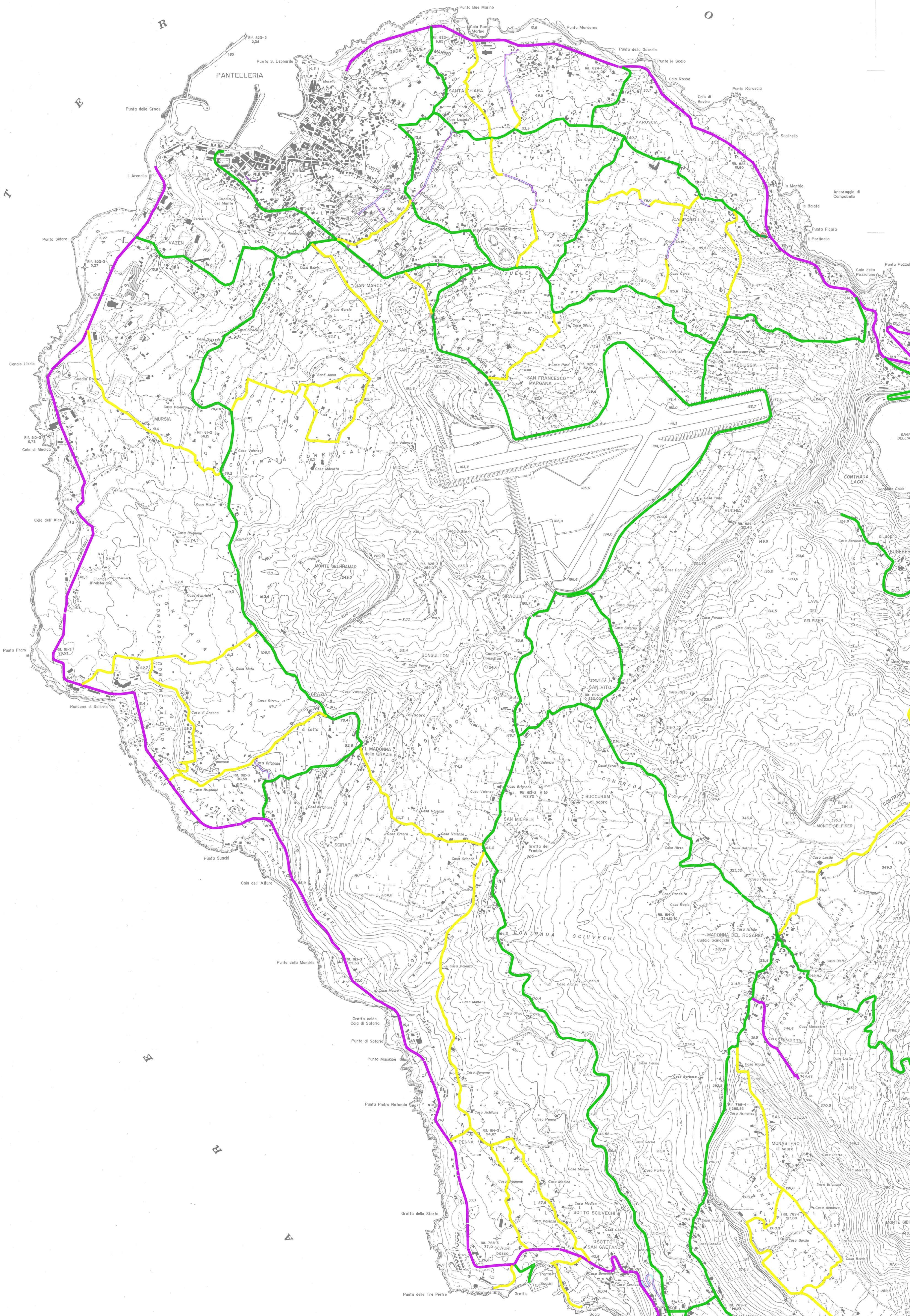
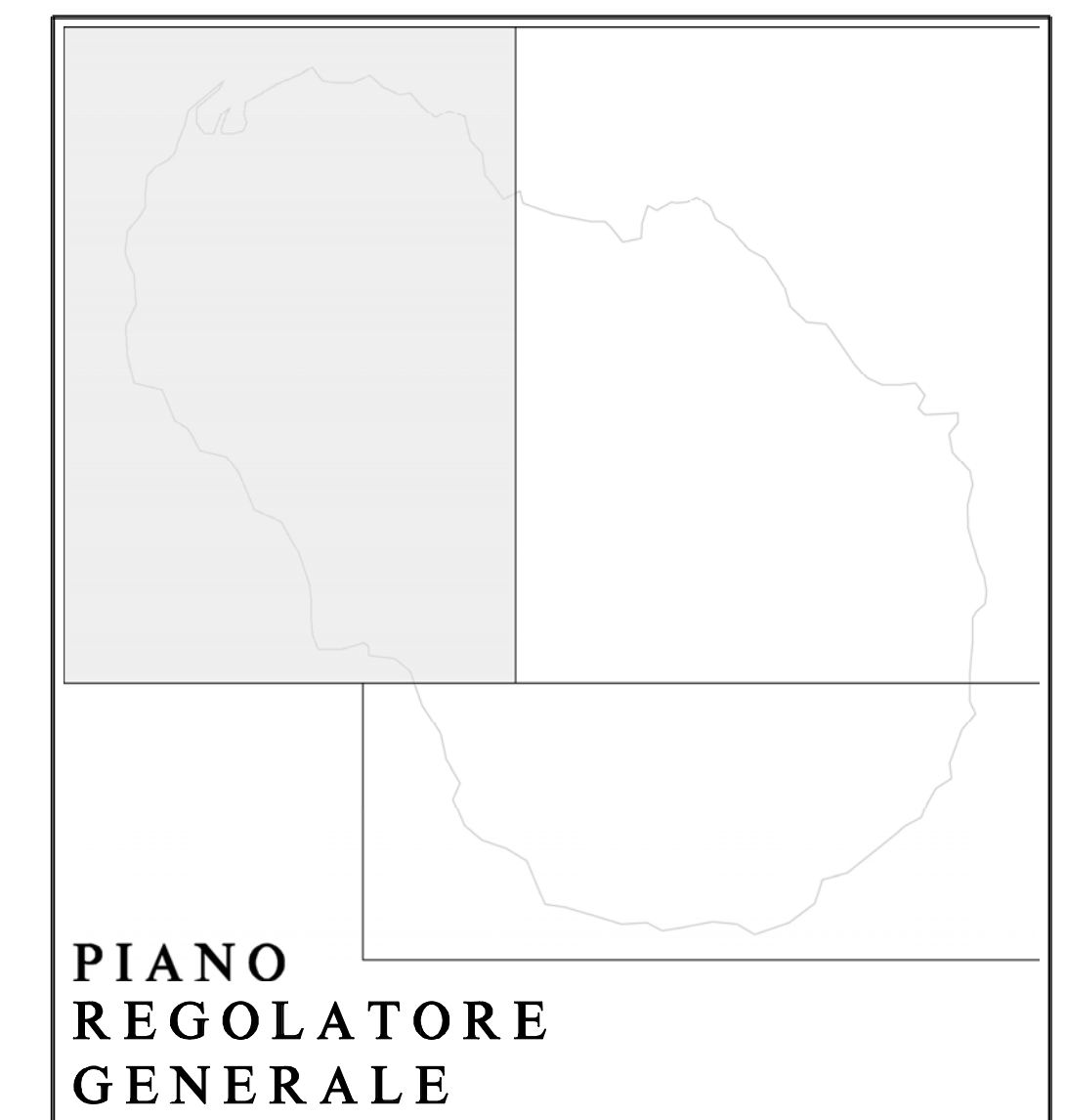


LEGENDA

-  Strade Provinciali
-  Strade extraurbane di primaria importanza
-  Strade oggetto di programma di intervento di sistemazione
-  Strade e/o tratti di collegamento di nuova realizzazione
-  Svincoli stradali da realizzare



COMUNE DI PANTELLERIA PROVINCIA DI TRAPANI



PIANO REGOLATORE GENERALE

TAV. 38/a

SCALA 1 10.000

VIABILITA'

Il Progettista

Il Segretario comunale

Il Sindaco